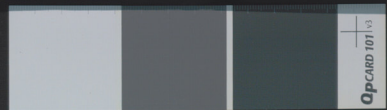


4/15 189-12 (10)

Г  
04



VT. 139. No. 4

Lib. Id. : 0010-1107004393  
Item Id. : 00001930 243

OpCARD 101 VS

IV

Messingverhandlung und Messing an Maschinen absetzen  
 Gekerkert von Witzje von nach oben so und ist ein  
 Witzje abkürzungen.

bib. id : 0010-110700 4397  
 item id : 00001930 243



Handwritten text in a cursive script, likely a historical document or letter. The text is densely packed and covers most of the page. It appears to be written in a historical form of a Romance language, possibly Italian or Spanish, given the context of the book's location. The script is highly stylized and difficult to decipher without specialized knowledge. The text is arranged in approximately 25 lines, with some variations in line length and spacing. There are some larger, possibly decorative or significant words that stand out. The overall appearance is that of a well-used manuscript or a formal letter from a past era.





Handwritten text in a cursive script, likely a historical document or manuscript. The text is densely packed and covers most of the page.

Handwritten text in a cursive script, likely a historical document or manuscript. The text is densely packed and covers most of the page.

Vertical text on the right margin of the second page, possibly a list or index.



Handwritten text in a cursive script, likely a historical document or manuscript. The text is densely packed and covers most of the page. Marginal numbers 1 through 15 are visible on the left side of the page.

Handwritten text in a cursive script, likely a historical document or manuscript. The text is densely packed and covers most of the page. Marginal numbers 1 through 15 are visible on the left side of the page.



Handwritten text in a cursive script, likely a historical document or manuscript. The text is densely packed and covers most of the page.

Handwritten text in a cursive script, likely a historical document or manuscript. The text is densely packed and covers most of the page.

Handwritten text in a cursive script, likely a historical document or manuscript. The text is densely packed and covers most of the page.

Handwritten text in a cursive script, likely a historical document or manuscript. The text is densely packed and covers most of the page.

















Handwritten text in a cursive script, likely a historical document or manuscript. The text is densely packed and covers most of the page.

Handwritten text in a cursive script, likely a historical document or manuscript. The text is densely packed and covers most of the page.





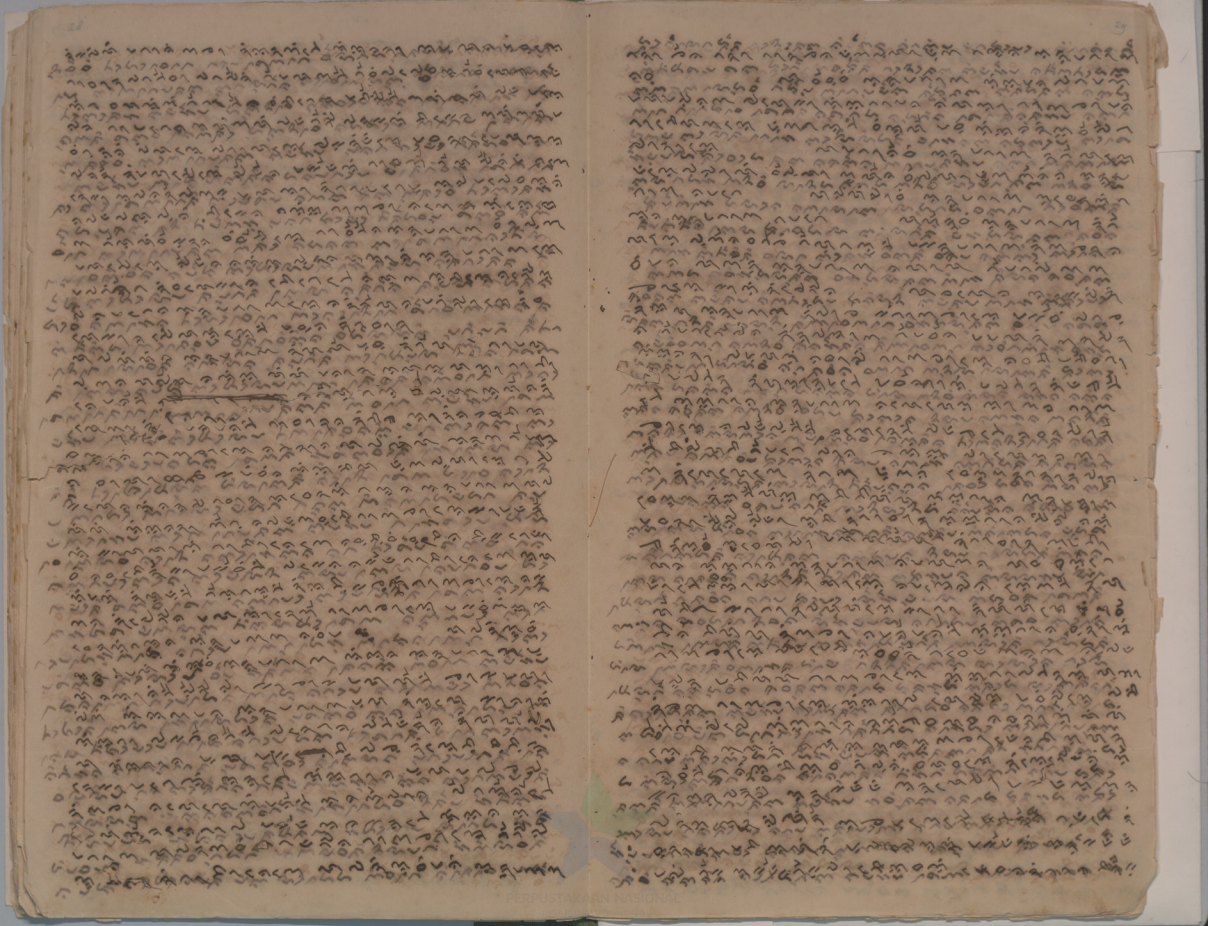
Handwritten text in a dense, cursive script, likely a historical document or manuscript. The text is arranged in approximately 25 horizontal lines across the page. The ink is dark, and the paper shows signs of age and wear.

Handwritten text in a dense, cursive script, likely a historical document or manuscript. The text is arranged in approximately 25 horizontal lines across the page. The ink is dark, and the paper shows signs of age and wear.



Handwritten text in a cursive script, likely a historical document or manuscript. The text is densely packed and covers the entire page.

Handwritten text in a cursive script, likely a historical document or manuscript. The text is densely packed and covers the entire page.





Handwritten text in a dense, cursive script, likely a historical record or ledger. The text is organized into multiple columns and rows, with some entries appearing to be numbered or dated. The ink is dark and the paper shows signs of age and wear.

Handwritten text in a dense, cursive script, continuing from the previous page. The text is organized into multiple columns and rows, with some entries appearing to be numbered or dated. The ink is dark and the paper shows signs of age and wear.





Handwritten text in Cyrillic script, densely packed across the page. The text is written in a cursive style and covers the entire page area.

Handwritten text in Cyrillic script, densely packed across the page. The text is written in a cursive style and covers the entire page area.

Handwritten text in a cursive script, densely packed across the page. The ink is dark and the paper shows signs of age and wear.

Handwritten text in a cursive script, densely packed across the page. The ink is dark and the paper shows signs of age and wear.



Handwritten text in a cursive script, likely a historical document or manuscript, covering the left page of an open book. The text is densely packed and spans the entire page.

Handwritten text in a cursive script, likely a historical document or manuscript, covering the right page of an open book. The text is densely packed and spans the entire page.

Handwritten text in a cursive script, densely packed across the page. The ink is dark and the paper shows signs of age.

Handwritten text in a cursive script, densely packed across the page. The ink is dark and the paper shows signs of age.



Handwritten text in a dense, cursive script, likely a historical document or manuscript. The text is arranged in approximately 25 horizontal lines across the page. The ink is dark, and the paper shows signs of age and wear.

Handwritten text in a dense, cursive script, likely a historical document or manuscript. The text is arranged in approximately 25 horizontal lines across the page. The ink is dark, and the paper shows signs of age and wear. There is a small mark or signature in the top right corner of the page.

Handwritten text in a cursive script, likely a historical document or manuscript. The text is dense and covers most of the page.

Handwritten text in a cursive script, likely a historical document or manuscript. The text is dense and covers most of the page.



Handwritten text in a cursive script, likely a historical document or manuscript. The text is densely packed and covers most of the page.

Handwritten text in a cursive script, likely a historical document or manuscript. The text is densely packed and covers most of the page.

The first page of the manuscript contains dense, handwritten text in a cursive script. The ink is dark and the paper shows signs of age, including some staining and unevenness. The text is organized into several paragraphs, with some lines starting with capital letters. The handwriting is consistent throughout the page, suggesting a single scribe.

The second page of the manuscript continues the handwritten text. It features a similar cursive script to the first page. The text is dense and fills most of the page, with some marginalia visible on the right side. The paper is aged and shows some wear, particularly at the edges. The overall appearance is that of a well-used historical document.



Handwritten text in a cursive script, likely a historical document or manuscript, covering the left page.

Handwritten text in a cursive script, likely a historical document or manuscript, covering the right page.

Handwritten text in a cursive script, densely packed across the page. The text is written in dark ink on aged, slightly yellowed paper. The script is highly stylized and difficult to decipher without specialized knowledge of the language or dialect. The lines of text are closely spaced and run horizontally across the page.

Handwritten text in a cursive script, densely packed across the page. The text is written in dark ink on aged, slightly yellowed paper. The script is highly stylized and difficult to decipher without specialized knowledge of the language or dialect. The lines of text are closely spaced and run horizontally across the page.



Handwritten text in a cursive script, likely a historical document or manuscript. The text is densely packed and covers most of the page area.

Handwritten text in a cursive script, likely a historical document or manuscript. The text is densely packed and covers most of the page area.

Handwritten text in a cursive script, likely a historical document or manuscript. The text is densely packed and covers most of the page area.

Handwritten text in a cursive script, likely a historical document or manuscript. The text is densely packed and covers most of the page. There are some faint markings and possibly a small diagram or signature at the bottom left.

Handwritten text in a cursive script, likely a historical document or manuscript. The text is densely packed and covers most of the page. There are some faint markings and possibly a small diagram or signature at the bottom left.



Handwritten text in a cursive script, likely a historical document or manuscript. The text is densely packed and covers most of the page. There are some faint markings and possibly a small diagram or signature at the bottom left.

Handwritten text in a cursive script, continuing from the previous page. The text is densely packed and covers most of the page. There are some faint markings and possibly a small diagram or signature at the bottom left.

Handwritten text in a cursive script, likely a historical document or manuscript. The text is dense and covers most of the page. There are some faint markings and possibly a small diagram or signature at the bottom left.

Handwritten text in a cursive script, continuing from the previous page. The text is dense and covers most of the page.

Handwritten text in a cursive script, continuing from the previous page. The text is dense and covers most of the page.

Handwritten text in a cursive script, continuing from the previous page. The text is dense and covers most of the page.



Handwritten text in a cursive script, likely a historical document or manuscript. The text is densely packed and covers most of the page. There are some faint markings and possibly a small stamp or mark near the bottom left corner.

Handwritten text in a cursive script, continuing from the previous page. The text is densely packed and covers most of the page. There are some faint markings and possibly a small stamp or mark near the bottom left corner.

Handwritten text in a cursive script, continuing from the previous page. The text is densely packed and covers most of the page. There are some faint markings and possibly a small stamp or mark near the bottom left corner.

Handwritten text in a cursive script, continuing from the previous page. The text is densely packed and covers most of the page. There are some faint markings and possibly a small stamp or mark near the bottom left corner.











VT. 199-10-9

Handwritten text on the left edge of the page, likely bleed-through from the reverse side. The text is written in a cursive script and is partially obscured by the binding and the edge of the page.

VT. 139. No. 4





13



Орсканд 101/13